

Macanta Phase II Boundary Change and School Reassignment

Board of Education
May 27th, 2025

School Capacity and Boundary Analysis

- **Initiated in 2019**
 - Recommend school boundary adjustments to address overcrowding and plan for growth
 - Utilize school buildings to their optimum capacity
 - Minimize overcrowding
 - Provide needed seats
- **Prioritizes proactive assignment of unoccupied areas**
 - Streamlined Limited Impact Process (SLIP) and annual review to identify opportunities
- **Boundary outcomes**
 - Cohesive, contiguous attendance areas
 - Transportation operational efficiency
 - Balanced enrollment at schools
 - Longevity and sustainability
 - Functional, convenient, and safe for students

SCBA History and Work to Date

What's been done and where are we at?

- Community surveys and extensive vetting to guide SCBA approach and consideration
- Overflow system to temporarily address growth in the Chatfield Urban Area
- Relief provided to Prairie Crossing Elementary School
- Reassignment of The Canyons of Castle Pines to Timber Trail Elementary School
- Overflow system, 6th grade reconfiguration for growth in East and Southeast Castle Rock
- Directing Crowfoot Valley corridor growth to accessible facilities with available seats
- ***Embarking on an effort to return the Macanta development back to Castle Rock neighborhood schools***
 - ***Phase 1: May 2024 reassignment of unoccupied portions to SGCE/MMS/DCHS and GRE/CMS/LHS***
 - ***Phase 2: 2025 evaluation of feasibility and community support and recommendation to Board of Education***

Macanta History and Work to Date

2003: LPE construction date

2010: SGCE construction date

2020: 6th grade reconfiguration from SOE and SGCE→MMS

2021: Recommendation, BOE adoption of Macanta PD reassignment from SGCE→LPE

2021: Canyons South breaks ground, initial completion of homes

2023: Looking Glass breaks ground, initial completion of homes. Tanterra homes expected upon completion of Chambers Road extension, mid-late 2025

2024: Recommendation and BOE adoption of unoccupied areas of Macanta PD reassignment from LPE→SGCE (includes initial proposal for Phase II project and feasibility study)

2025: Recommendation to reassign occupied areas of Macanta PD from LPE→SGCE effective 2026-27 school year

Legend

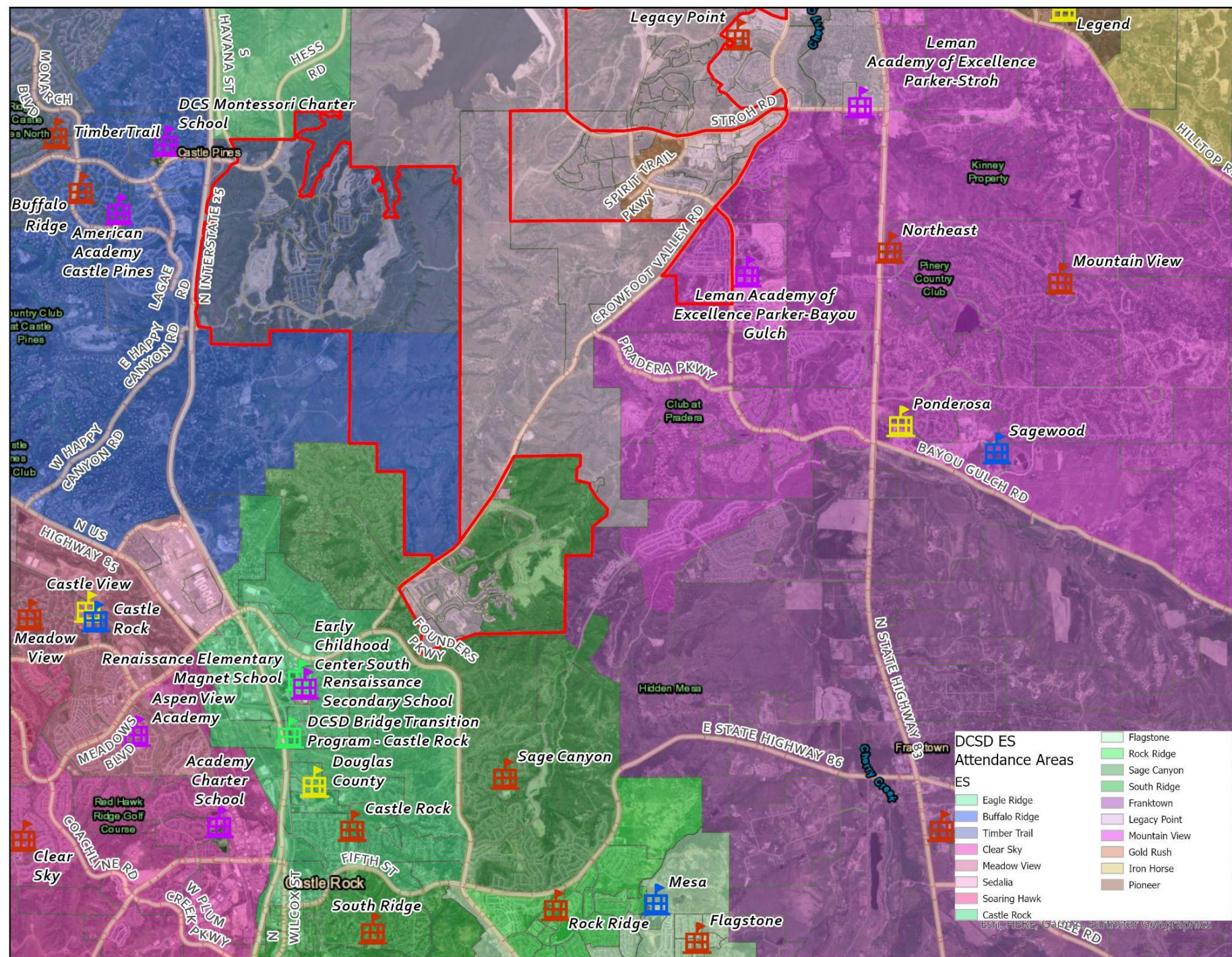
DCSD ES
Attendance Areas
ES

- Buffalo Ridge
- Castle Rock
- Sage Canyon
- Franktown
- Legacy Point
- Mountain View

- Macanta Planned Development

Project Focus Area

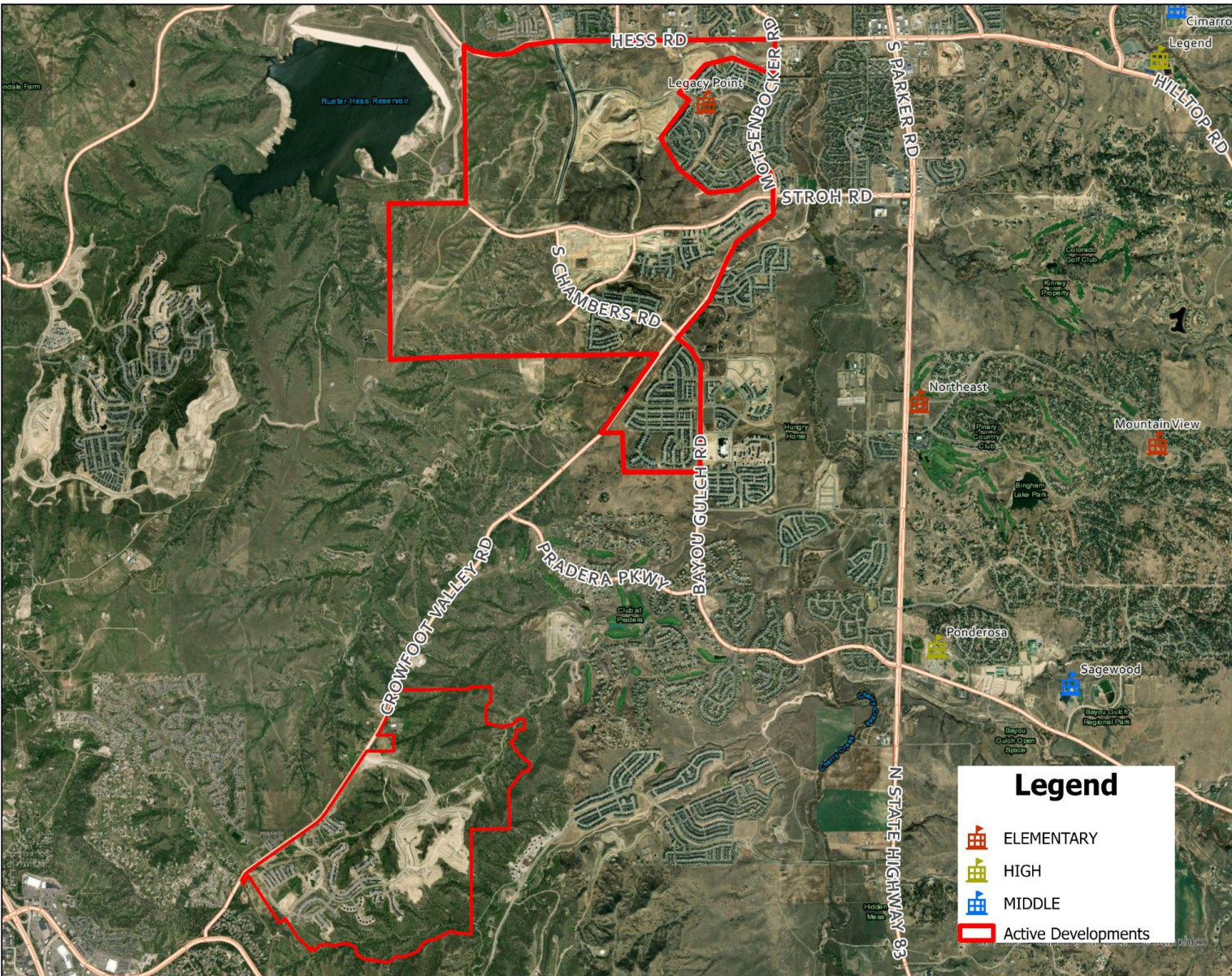
- Neighborhood schools that residences are currently assigned to
 - LPE, SGMS, PHS
- Neighborhood schools proposed for reassignment
 - SGCE, MMS, DCHS



Problem Statement

- The current total enrollment at Legacy Point Elementary School exceeds the facility's ideal program capacity. This is forecasted to continue over the next five years, and be at 137% of the building's Ideal Program Capacity in five years.
- LPE is forecasted for continual enrollment growth with the ongoing build out of the Looking Glass and Tanterra developments. It is unknown at this time how much of this enrollment growth Leman Bayou Gulch will absorb.
- 6th grade reconfiguration, the “peak” of residential development in the SGCE attendance area, general decline in student generation, decline in Castle Rock residential permits, and the completion of a long range build out study all confirm the current and projected capacity available at SGCE
- The Macanta planned development is currently split between school communities
- Chronic transportation issues that would be solved with reassignment

Enrollment Growth and School Capacity



Looking Glass and Trails at Crowfoot (Anthology South)-3,379 homes

Looking Glass-538/2,489 built (~20%)

Trails at Crowfoot-733/890 built (82%)

Tanterra (Anthology North)-3,305 homes

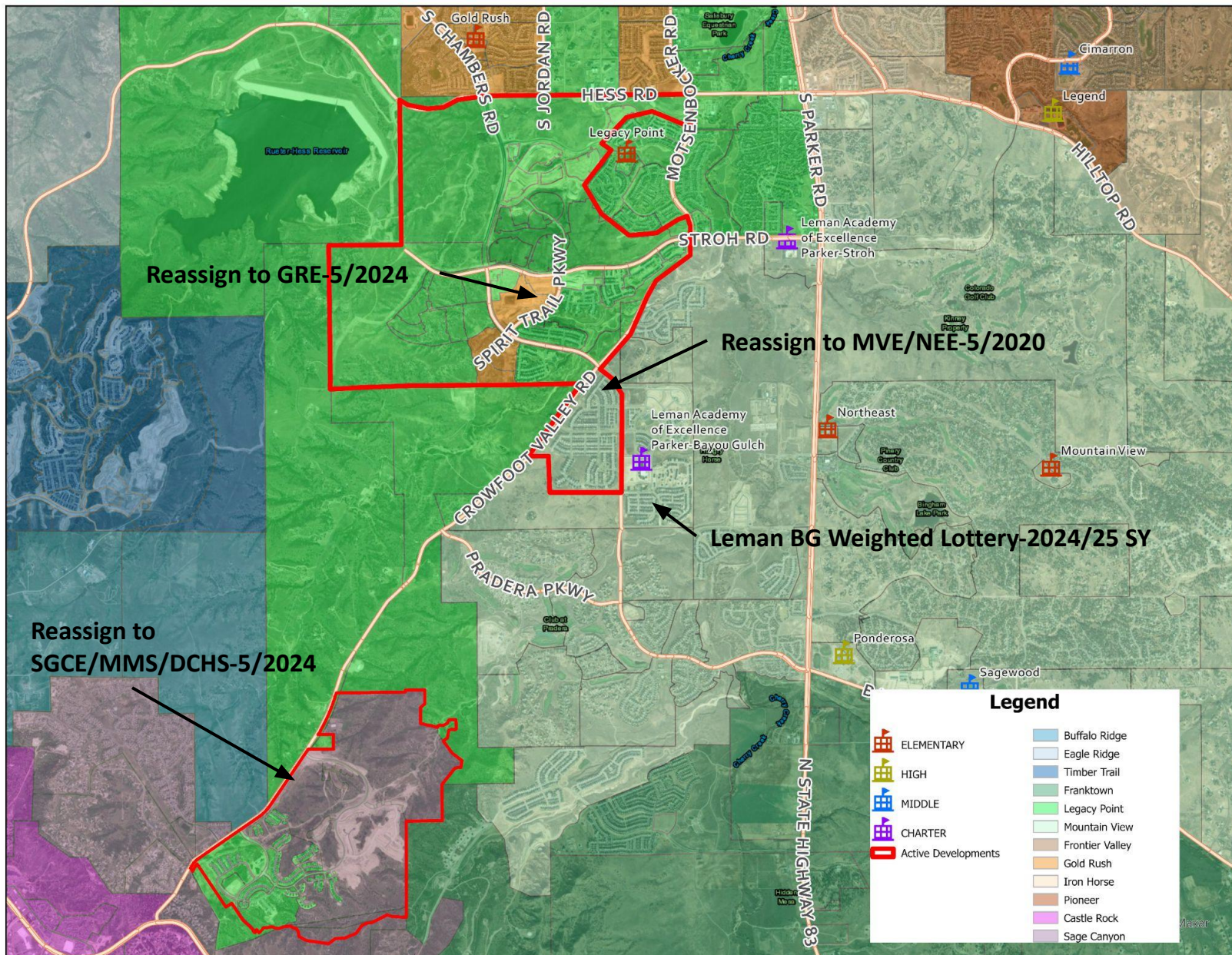
0 homes built (0% built out)

Canyons South-968 homes

530 built (~55% built out)

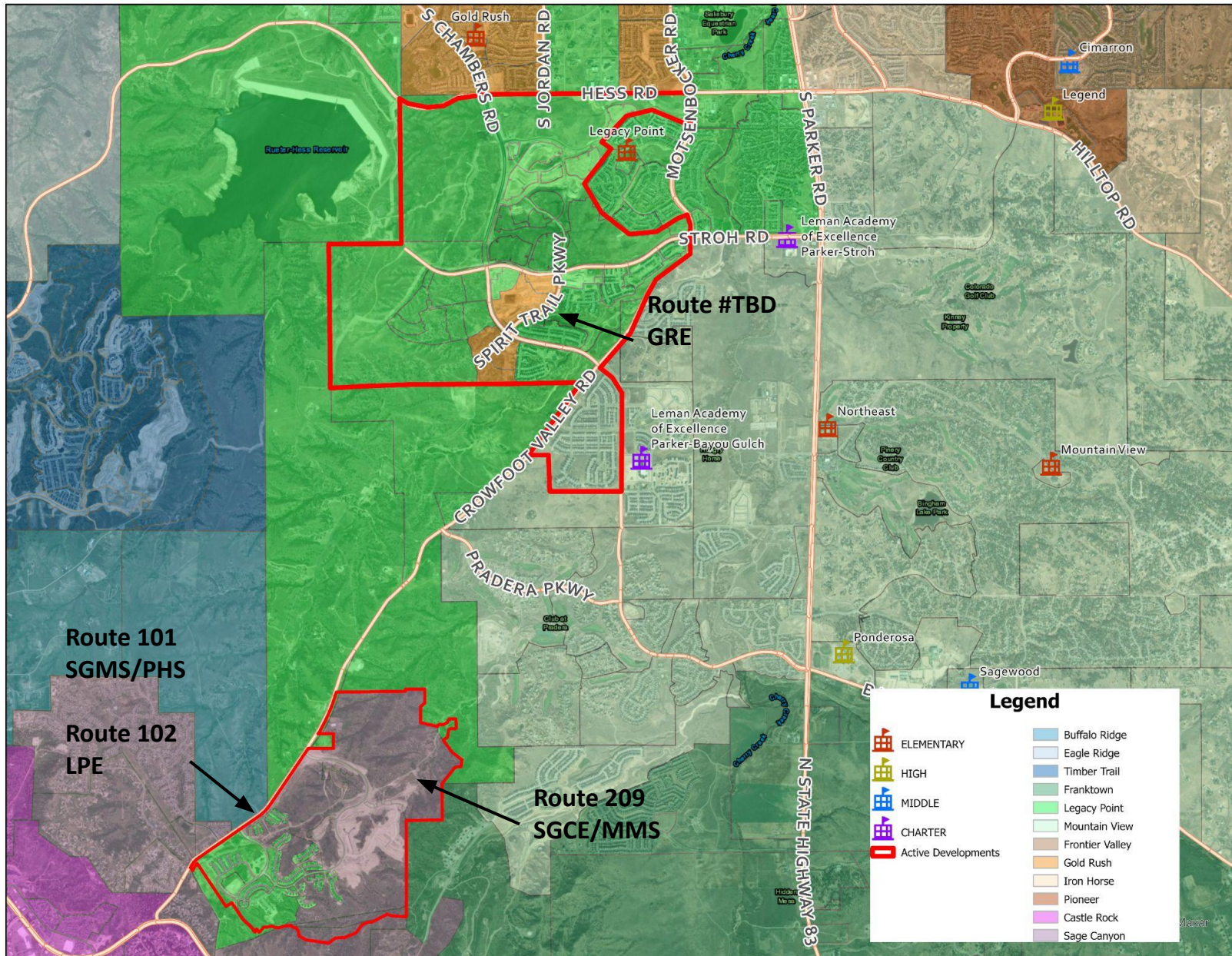
**7,652 homes, 1,801 completed
~24% built out**

Capacity

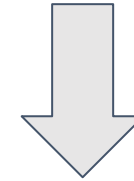


	2024-25	2025-26 Forecast	2029-30 Forecast
Legacy Point	499 121%	506 122%	568 137%
Sage Canyon	552 83%	540 81%	578 87%
Gold Rush	639 90%	614 86%	645 90%

DCSD Transportation



- 2 routes servicing Macanta to LPE, SGMS and PHS
- 1 route servicing Macanta to SGCE and MMS
- 1 route servicing Macanta to DCHS*
- 1 route will need to be added to service Looking Glass to GRE



- 2 routes servicing LPE, SGMS, PHS and new growth in GRE (LPE and GRE are different start times and can be tiered)
 - LPE route from 1:15 to 45 minutes
 - Flexibility to consolidate LPE/SGMS/PHS and GRE routes
- 1 route servicing Macanta to SGCE and MMS
- 1 route servicing Macanta to DCHS

-1 route

Timeline & Action Items



Stakeholder List

Who will guide and implement this?

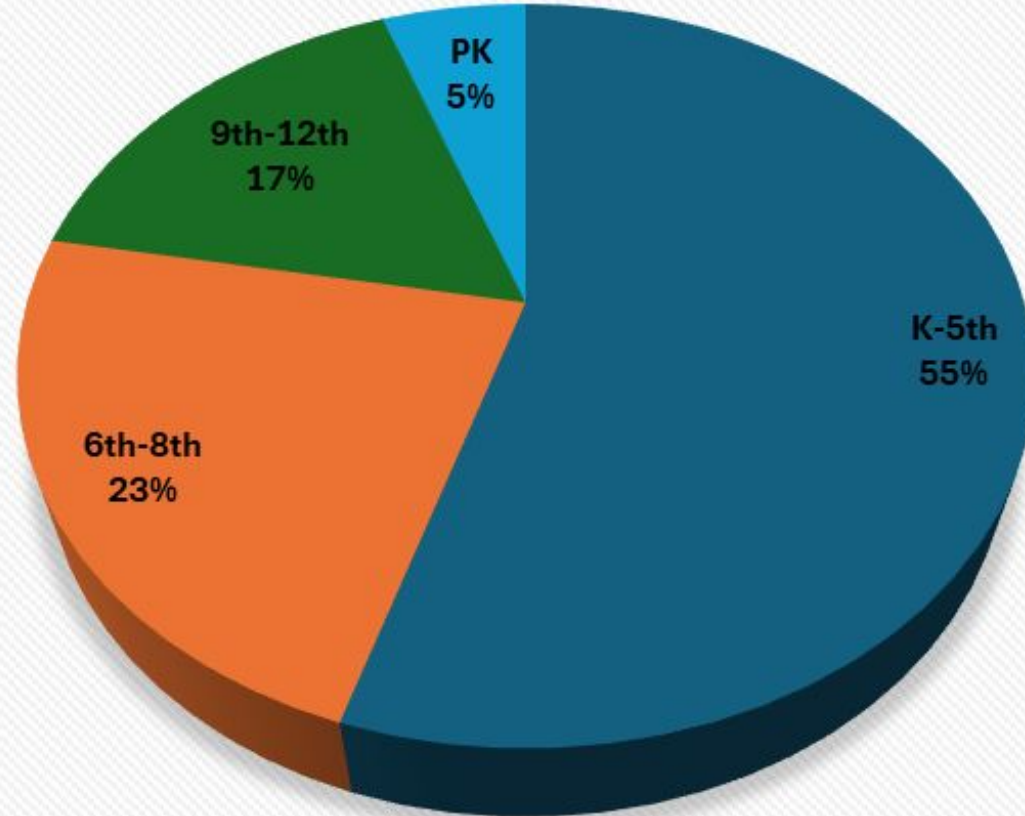
- DCSD Advisory Committee
 - EDOSs
 - School Principals and Assistant Principals
 - Transportation
 - Budget
 - Student Data
 - Choice Programming

Who will be impacted by this?

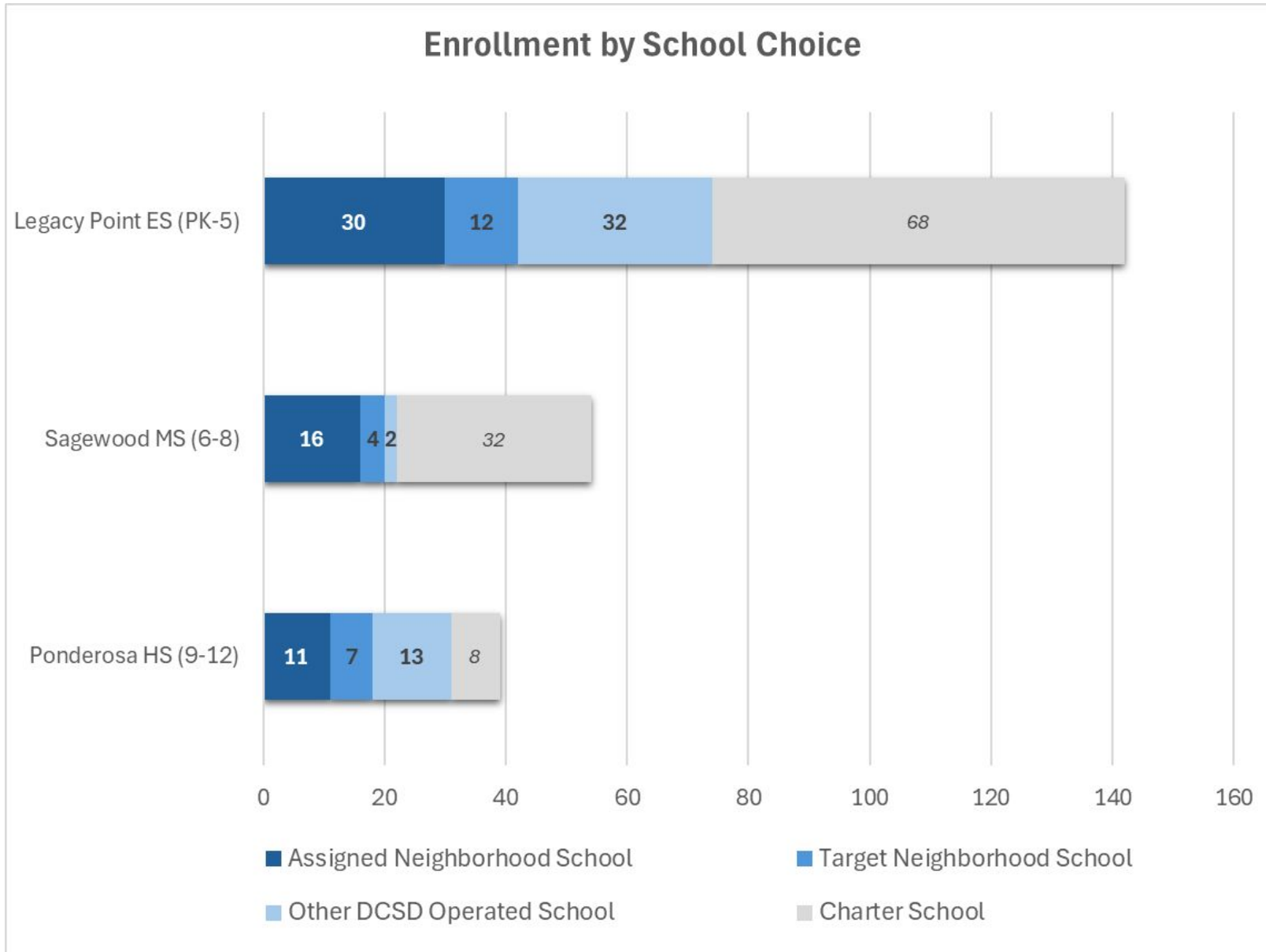
- DCSD households residing in Macanta PD
- Current and prospective owners in Macanta PD (no DCSD enrollment)
- DCSD students and parent(s)/guardian(s) residing in the area proposed for reassignment
- Macanta owner/developer and builders
- Staff at impacted schools

Project Area Enrollment

- 235 total PK-12 residing within the area of Macanta being considered for reassignment (aka project area)
 - 13 PK
 - 129 K-5
 - 54 6-8
 - 39 9-12



Enrollment Snapshot



- 57 students at LPE, SGMS, or PHS
 - 4 on LPE route
 - 15 on SGMS/PHS route
- 70 students attending other DCSD operated school
 - 23 at “target schools” already
 - 47 at other DCSD operated schools
- 108 students attending DCSD charter school

~25% of total households in project area considered ***directly*** impacted

Proposed Reboundary

Area currently assigned to **Legacy Point Elementary, Sagewood Middle School, and Ponderosa High School** to **Sage Canyon Elementary, Mesa Middle School, and Douglas County High School**

- Effective 2026-27 school year
- Legacy enrollment guaranteed to all students currently enrolled at LPE, SGMS, and PHS
- DCSD legacy transportation for those wishing to remain at LPE, SGMS, or PHS
may be available for a maximum of 1 year following the reassignment
**Students with IEP with DCSD transportation as related service would not be affected*
- **Open enrollment first priority to all students/households affected by the change**
District operated schools enrollment

Outreach and Engagement

- Notification via email and certified mail
- Present at pre-existing, already scheduled meetings and events
 - LPE SAC: 3/21
 - DCHS SAC: 4/7
 - PHS SAC: 4/9
 - SGMS PTO: 4/15
 - SGMS SAC: 5/8
- Virtual info sessions for Macanta developers and builders and sales office visits
 - 4/16, 4/22, 4/23
- Principal meetings
 - LPE: 4/9
 - SGCE: 4/4
- Public meetings
 - In person: 4/30
 - Virtual: 5/15
- Long Range Planning Committee
 - 5/7

Survey Feedback

**Doesn't reside in project area
or resides in project area but is
not a DCSD student or
parent/guardian**

What is your level of support for
proposed reassignment?

**Resides within the project area
and is a LPE, SGMS, or PHS
student or parent/guardian**

1) What is your level of support for
proposed reassignment?

2) If the reboundary were to be
approved effective 2026-27 school
year, would you want to stay at your
current school of attendance (LPE,
SGMS, PHS) or would you be
interested in enrolling at SGCE, MMS,
or DCHS?

3) How important is eligibility
for/availability of DCSD Transportation
services in your 2026-27 enrollment
decision(s) and why?

4) Would 1 year of transitional DCSD
Transportation service affect your
decision? In what way? (open ended)

5) Are there students in your
household that attend schools other
than LPE, SGMS or PHS? If so which
ones?

**Resides within the project area
and is a SGCE, MMS, or DCHS
student or parent/guardian**

1) What is your level of support for
proposed reassignment?

2) If the reboundary were to be
approved effective 2026-27 school
year, would you want to stay at your
current school of attendance (SGCE,
MMS, DCHS) or would you be
interested in enrolling elsewhere?

3) How important is eligibility
for/availability of DCSD Transportation
services in your 2026-27 enrollment
decision(s) and why?

4) Are there students in your
household that attend schools other
than SGCE, MMS or DCHS? If so which
ones?

**Resides within the project area
and is a student or
parent/guardian at DCSD
schools *other than* LPE, SGMS,
PHS, SGCE, MMS, or DCHS**

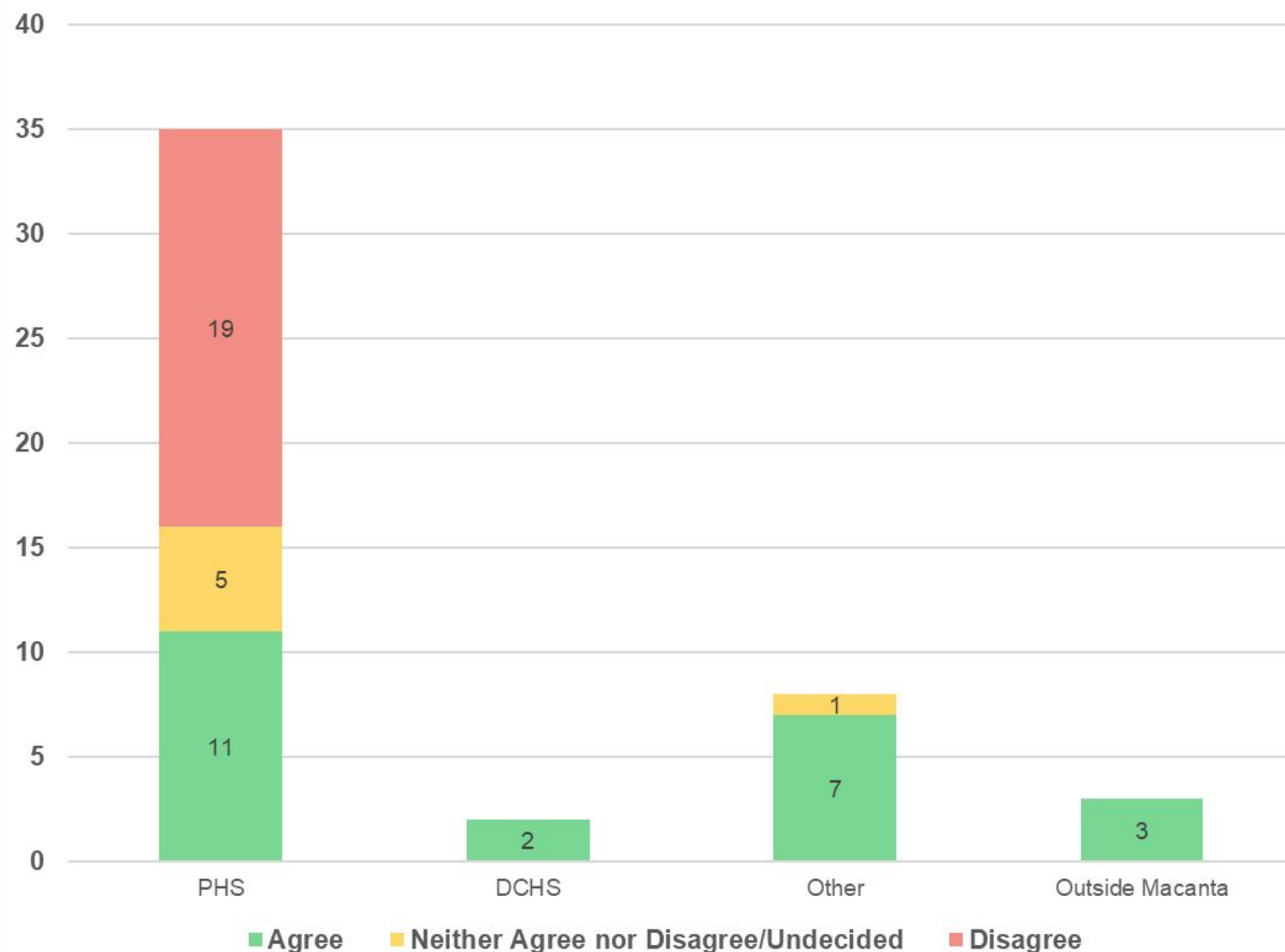
1) What is your level of support for
proposed reassignment?

2) If the reboundary were to be
approved effective 2026-27 school
year, would you want to stay at your
current school of attendance (SGCE,
MMS, DCHS) or would you be
interested in enrolling elsewhere?

3) How important is eligibility
for/availability of DCSD Transportation
services in your 2026-27 enrollment
decision(s) and why?

Survey Feedback

Support for Proposed Boundary Change and Reassignment



Those Opposing the Proposed Reassignment

- Disruption, inconsistency and instability
- Established in Parker community and schools
- Transportation issues and logistics
- Poor district planning and process

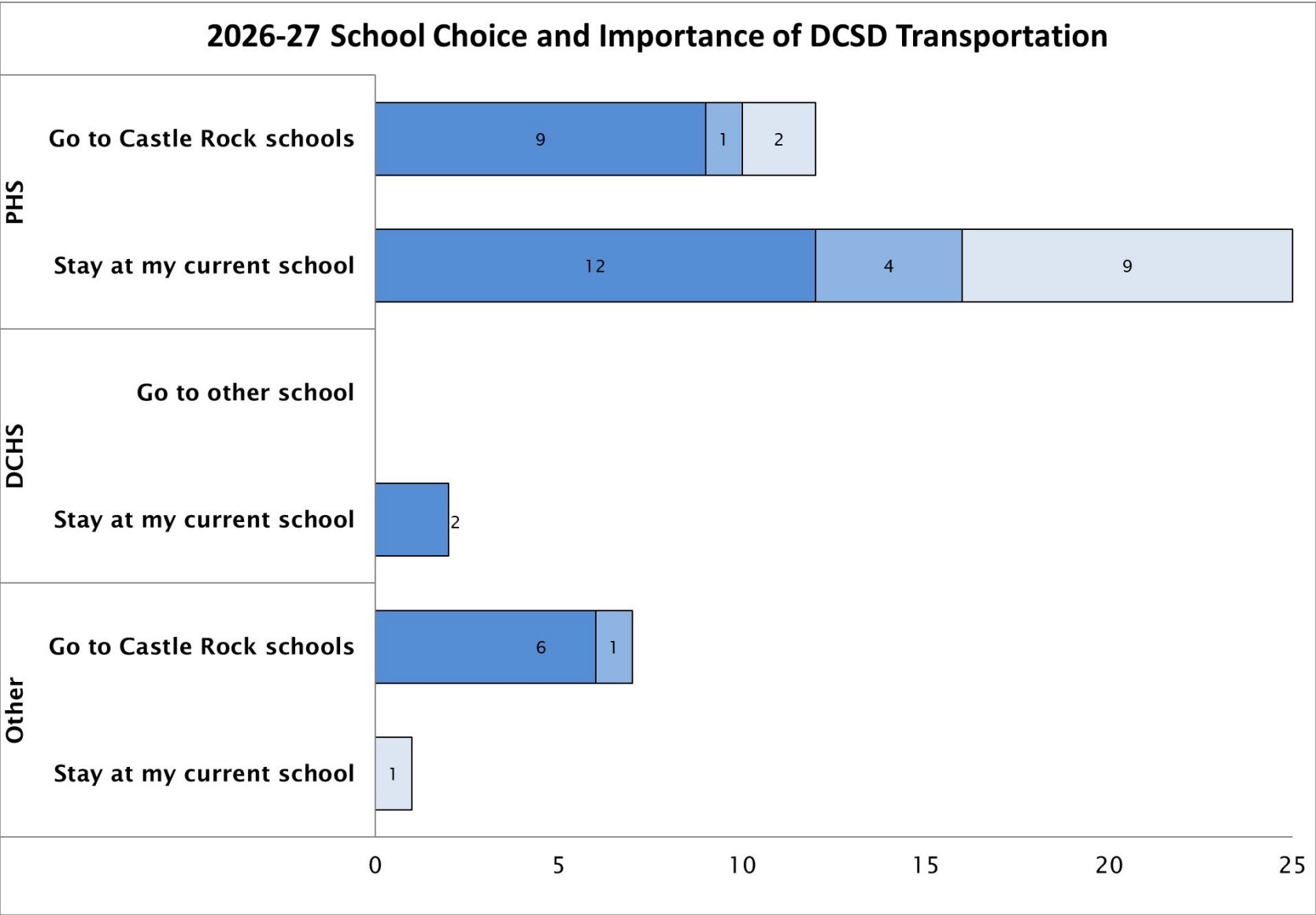
Those in Support of the Proposed Reassignment

- Castle Rock community = Castle Rock schools
- Proximity and convenience
- Established in Castle Rock community
- Community cohesion
- "Course correct" from 2021 decision

Neither Agree nor Disagree

- School choice and legacy enrollment make impact negligible
- No need for transportation

Survey Feedback



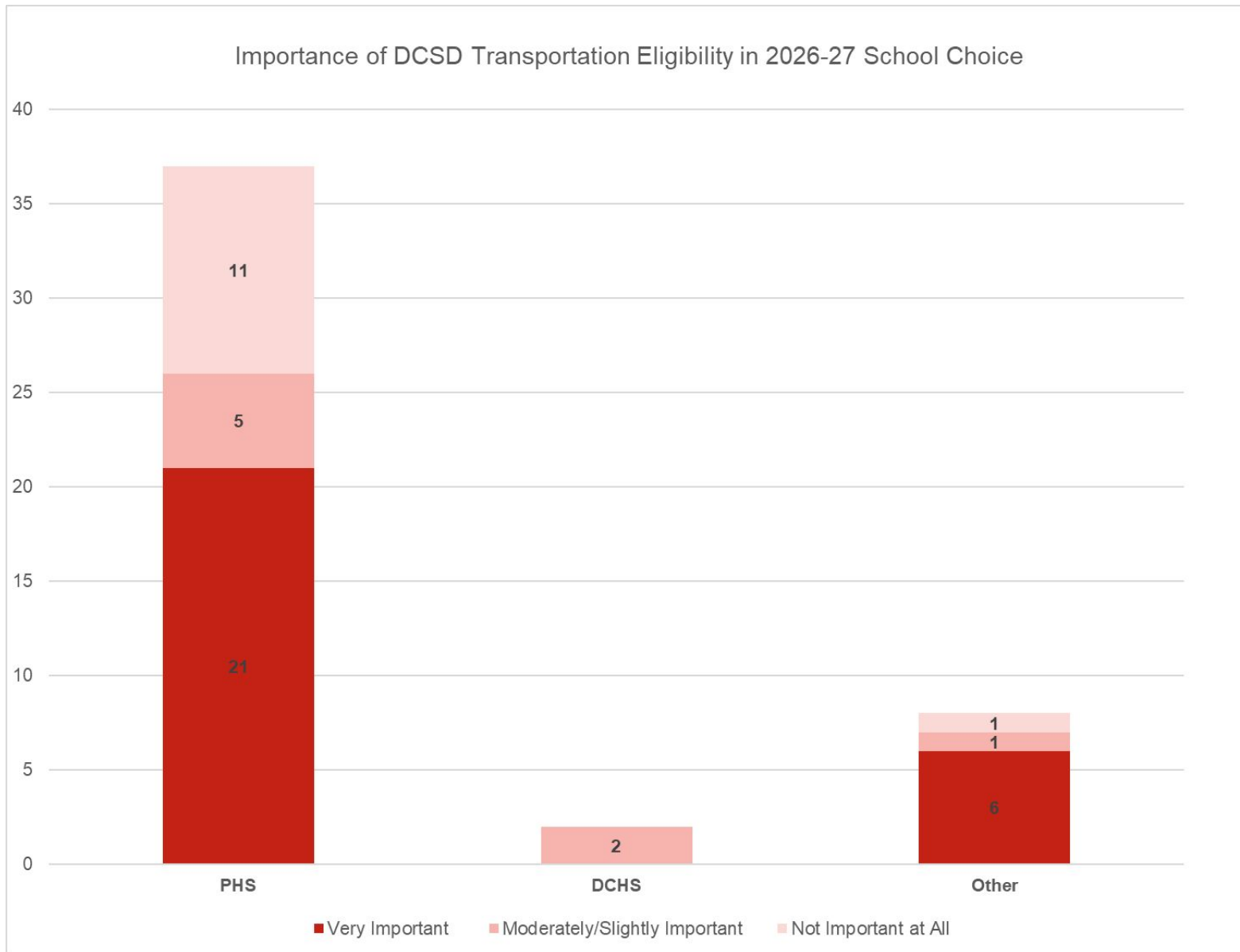
DCSD Transportation is Important in 2026-27 School Choice

- Critical. Rely on service.
- Parents work schedule/conflict
- Other options not available
- Multiple child household schedule/conflict

DCSD Transportation Is Only Moderately Important or Not Important At All in 2026-27 School Choice

- Don't use DCSD transportation
 - The 1+ hr bus ride time
 - Inconsistent service
 - DCSD employee or student driver
- Nice to have but school choice is priority

Survey Feedback



Would 1 Year Transitional Service Help?

- Those wanting to stay at Parker schools and stating DCSD Transportation service important
 - Yes-12
 - No-4

Additional Captured Feedback

Email

- Opposed to change
 - Too much change in short period of time
 - Need DCSD transportation to Parker schools
 - Planning and process

Virtual Public Meeting

- Opposed to change
 - Transportation is critical
 - Legacy enrollment ≠ choice without transportation
 - Consider legacy transportation for those enrolled at LPE/SGMS/PHS
 - Consider compromise
 - Midway bus stop
 - Catch bus at existing stop

Recommendation

Adoption of the proposed neighborhood elementary school reassignment of households located in Canyons South (aka Macanta) Filings 1A, Amendments 1-3 from **Legacy Point Elementary, Sagewood Middle School, and Ponderosa High School** to **Sage Canyon Elementary, Mesa Middle School,** and Douglas County High School effective for the 2026-27 school year.

