



**PERFORMANCE
FRAMEWORKS DATA**

OVERVIEW OF STATE ACCOUNTABILITY

Education Accountability Act of 2009 (SB 09-163) authorizes the Colorado Department of Education to:

- annually review of the performance of public schools and districts
- make recommendations to the State Board of Education concerning the type of school improvement plan and the accreditation category for each district.

• Source: Colorado Department of Education

PERFORMANCE INDICATORS

- The performance frameworks measure attainment on the key performance indicators identified in SB 09-163 as the measures of educational success:
 - Academic achievement
 - Academic longitudinal growth
 - Postsecondary and workforce readiness (HS only)
- State identified measures and metrics for each of these performance indicators are combined to arrive at an overall evaluation of a school's or a district's performance.

• Source: Colorado Department of Education

ASSESSMENT DATA USED IN THE FRAMEWORKS

- **Academic Achievement**
 - English language arts and math CMAS assessments
 - PSAT Evidence Based Reading and Writing and Math (HS only)
- **Academic Growth**
 - English language arts and math on CMAS assessments (3-9)
 - PSAT to SAT growth (HS only)
- **Postsecondary and Workforce Readiness (HS only)**
 - SAT
 - Dropout, Graduation and Matriculation Rates

• Source: Colorado Department of Education

School and District Performance Framework Ratings and Explanatory Notes

Ratings	
SCHOOL PLAN TYPES	
PERFORMANCE PLAN	Green
IMPROVEMENT PLAN	Yellow
PRIORITY IMPROVEMENT PLAN	Orange
TURNAROUND PLAN	Red
INSUFFICIENT STATE DATA: SMALL TESTED POPULATION*	Grey
INSUFFICIENT STATE DATA: LOW PARTICIPATION**	Grey
DISTRICT ACCREDITATION RATINGS	
ACCREDITED WITH DISTINCTION	Blue
ACCREDITED	Green
ACCREDITED WITH IMPROVEMENT PLAN	Yellow
ACCREDITED WITH PRIORITY IMPROVEMENT PLAN	Orange
ACCREDITED WITH TURNAROUND PLAN	Red
INSUFFICIENT STATE DATA: SMALL TESTED POPULATION*	Grey
INSUFFICIENT STATE DATA: LOW PARTICIPATION**	Grey



Descriptors

Meets Participation

above 95% participation rate in 2 or more content areas

Low Participation

below 95% participation rate in 2 or more content areas

Decreased Due to Participation

below 95% participation, once parent excuses are removed, in 2 or more content areas

8



Performance Plan: Meets 95% Participation

Performance Plan: Low Participation

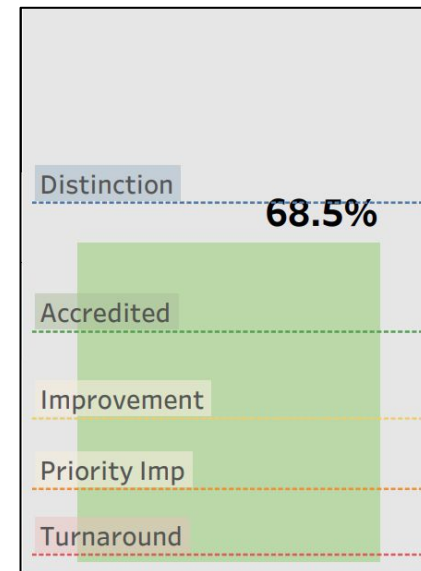
Improvement Plan: Low Participation

Improvement Plan: Decreased due to Participation

2022 DISTRICT PERFORMANCE FRAMEWORK SUMMARY

Accredited: Low Participation

Indicator Rating Totals			
Performance Indicator	Percent of Points Earned	Points Earned/ Eligible	Rating
Academic Achievement	66.7%	20.0/30	Meets
Academic Growth	70.5%	28.2/40	Meets
Postsecondary & Workforce Readiness	67.8%	20.3/30	Meets



- Source: Colorado Department of Education

2022 DISTRICT PERFORMANCE FRAMEWORK SUMMARY

Summary of Ratings by EMH Level						
EMH Level	Performance Indicator	Percent of Points Earned	Points Earned/ Eligible	Rating	Points by Level	Overall Rating by Level
Elementary	Academic Achievement	69.8%	27.9/40	Meets	72.4%	Accredited
	Academic Growth	74.1%	44.5/60	Meets		
Middle	Academic Achievement	66.7%	26.7/40	Meets	67.4%	Accredited
	Academic Growth	67.9%	40.7/60	Meets		
High	Academic Achievement	63.5%	19.1/30	Meets	67.2%	Accredited
	Academic Growth	69.6%	27.8/40	Meets		
	Postsecondary & Workforce Readiness	67.8%	20.3/30	Meets		

- Source: Colorado Department of Education

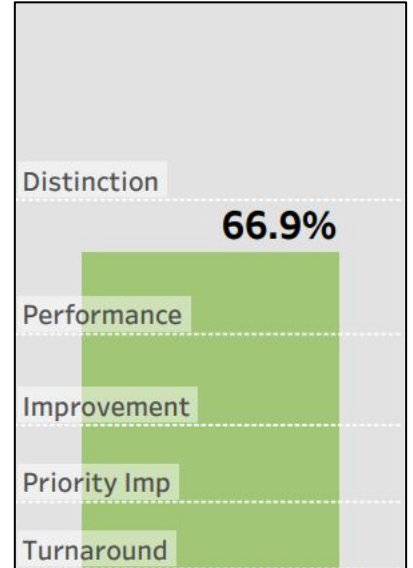


2019 DISTRICT PERFORMANCE FRAMEWORK SUMMARY

Accredited: Low Participation

Indicator Rating Totals

Performance Indicator	% Pts Earned	Weighted Pts Earned/Pts Eligible	Rating
Academic Achievement	63.4%	19.0/30	Meets
Academic Growth	69.3%	27.7/40	Meets
Postsecondary & Workforce Readiness	67.3%	20.2/30	Meets



8

- Source: Colorado Department of Education

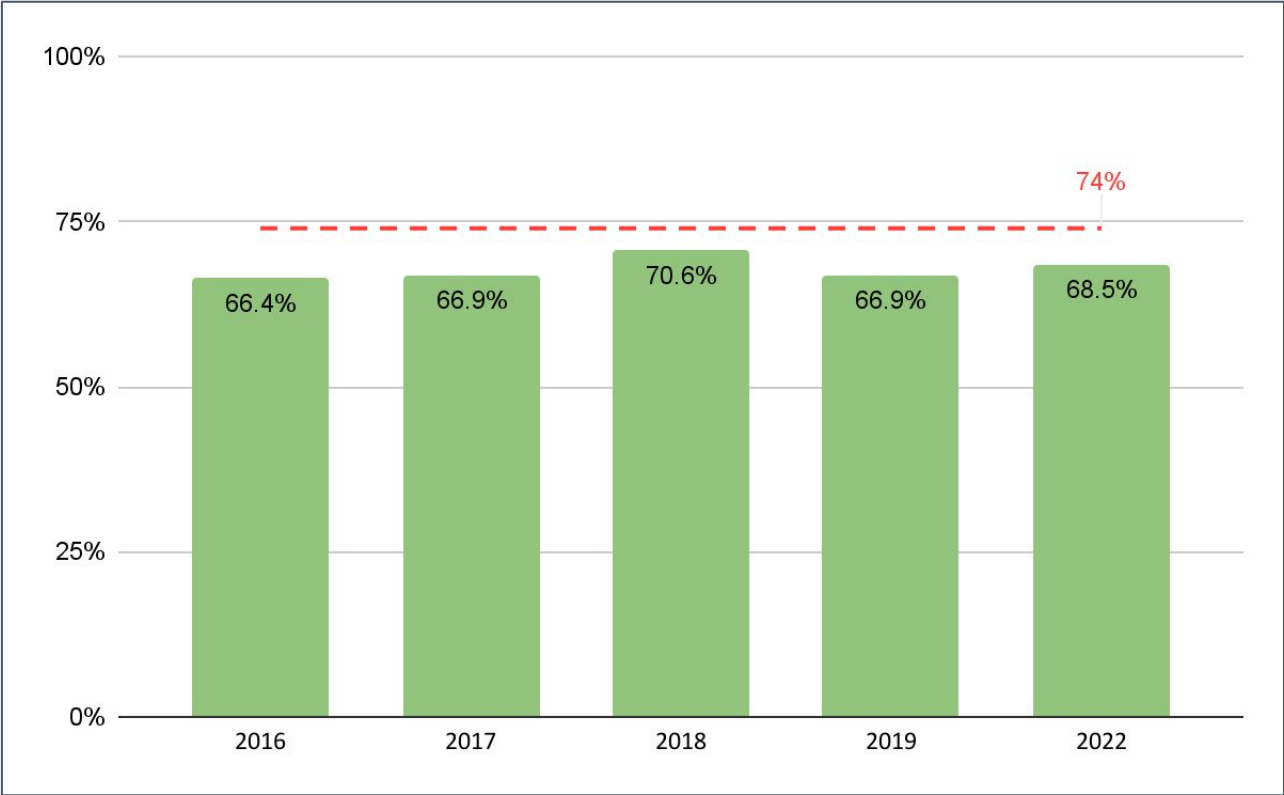
2019 DISTRICT PERFORMANCE FRAMEWORK SUMMARY

Summary of Ratings by EMH Level

EMH Level	Performance Indicator	% Pts Earned	Weighted Pts Earned/Pts Eligible	Rating	% Pts by EMH	Rating
Elementary	Academic Achievement	67.4%	27.0/40	Meets	70.9%	Accredited
	Academic Growth	73.2%	43.9/60	Meets		
Middle	Academic Achievement	66.0%	26.4/40	Meets	66.1%	Accredited
	Academic Growth	66.1%	39.7/60	Meets		
High	Academic Achievement	56.9%	17.1/30	Approaching	64.8%	Accredited
	Academic Growth	68.8%	27.5/40	Meets		
	Postsecondary & Workforce ..	67.3%	20.2/30	Meets		

- Source: Colorado Department of Education

DPF Trend Data



Accreditation categories are based on the total percentage of points earned:

Accredited with Distinction:
74.0% - 100%

Accredited:
56.0% - 73.9%

Accredited with Improvement Plan:
44.0 - 55.9%

Accredited with Priority Improvement Plan:
34.0% - 43.9%

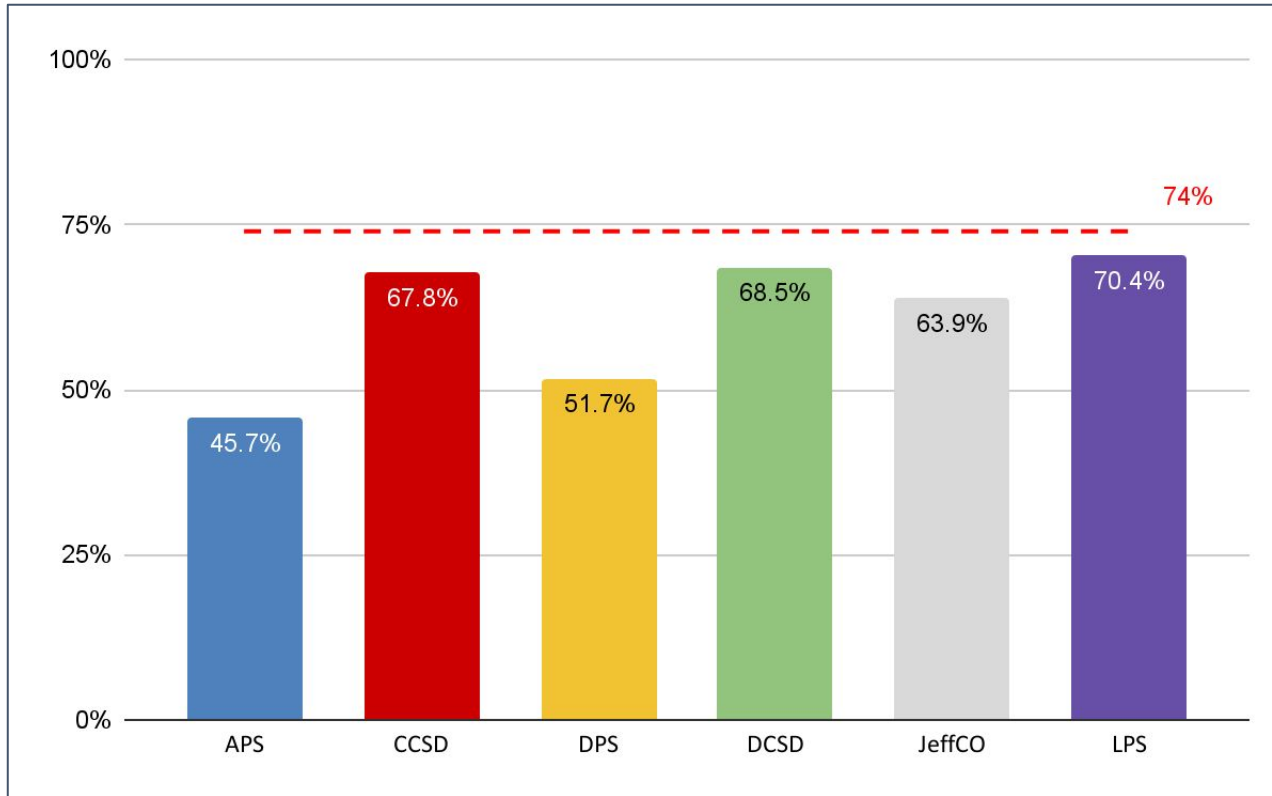
Accredited with Turnaround Plan:
0.0% - 33.9%

Insufficient State Data:
No reportable achievement and growth data

• Source: Colorado Department of Education



2022 Comparative Data



Accreditation categories are based on the total percentage of points earned:

Accredited with Distinction:
74.0% - 100%

Accredited:
56.0% - 73.9%

Accredited with Improvement Plan:
44.0 - 55.9%

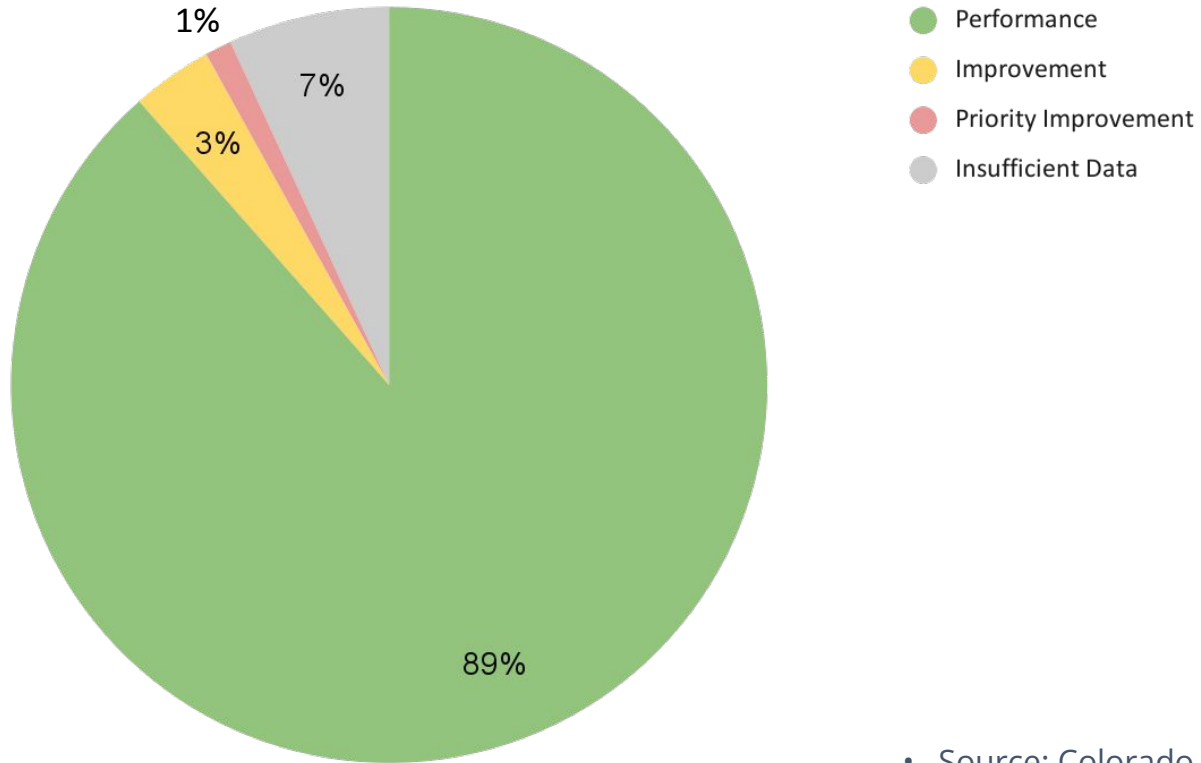
Accredited with Priority Improvement Plan:
34.0% - 43.9%

Accredited with Turnaround Plan:
0.0% - 33.9%

Insufficient State Data:
No reportable achievement and growth data

- Source: Colorado Department of Education

2022 SCHOOL PERFORMANCE FRAMEWORK SUMMARY



• Source: Colorado Department of Education

SCHOOL PERFORMANCE FRAMEWORK SUMMARY

	2017	2018	2019	2022
Performance	84%	93%	92%	89%
Improvement	11%	3%	6%	3%
Priority Improvement	3%	2%	1%	1%
Turnaround	--	--	--	--
Insufficient Data	1%	1%	1%	7%
	100%	100%	100%	100%

- Source: Colorado Department of Education

SCHOOL PERFORMANCE FRAMEWORK AWARDS

	2017	2018	2019	2022*
John Irwin Schools of Excellence Awards	11	16	21	28
Governor's Distinguished Improvement Awards	9	13	11	17
High School Academic Growth Awards		1		1
	20	30	32	46

- Source: Colorado Department of Education

2022 PERFORMANCE FRAMEWORKS - UNIQUE CONTEXTUAL FACTORS

- Transitional Year (Limited data availability)
- Student Participation

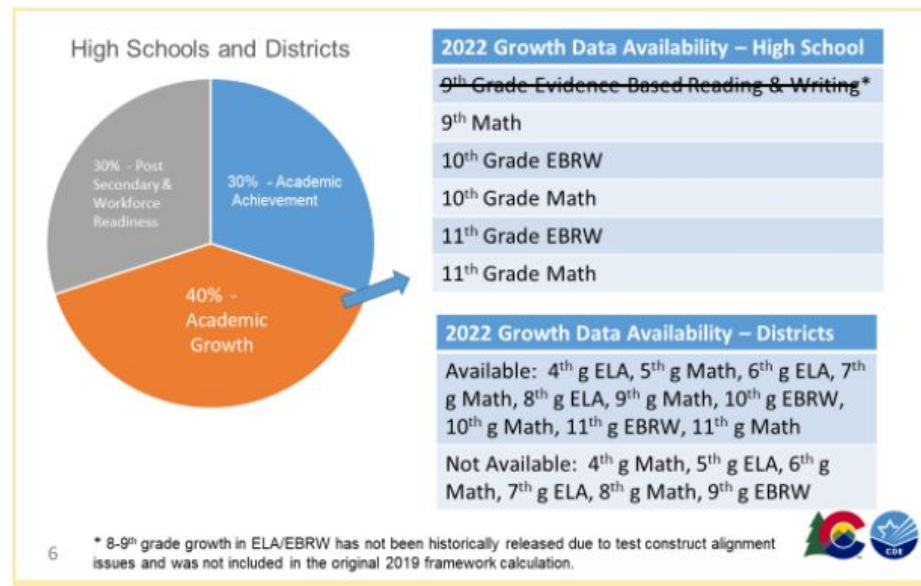
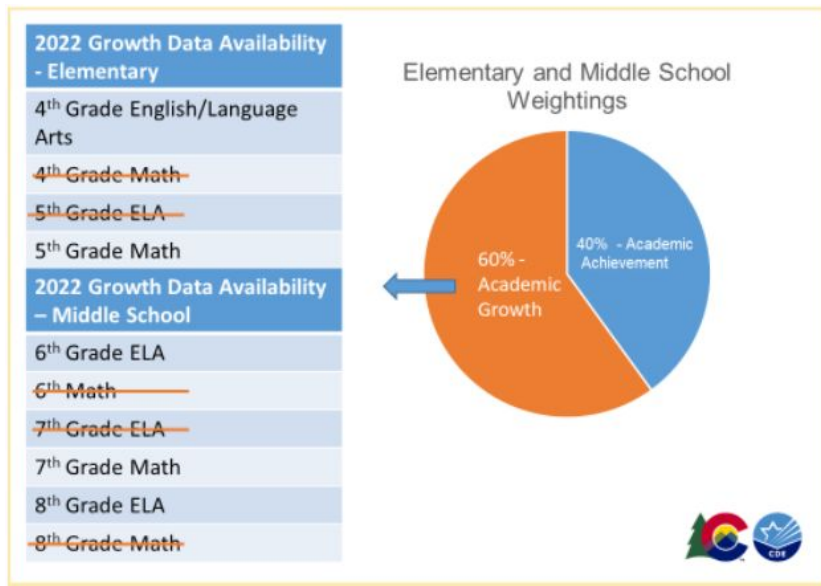
Test Participation Rates*						
Subject	Total Records	Valid Scores	Participation Rate	Parent Excusals	Accountability Participation Rate	Rating
English Language Arts	43,380	37,366	86.1%	5,239	98.0%	Meets 95%
Math	43,380	37,346	86.1%	5,286	98.0%	Meets 95%
Science	14,693	8,462	57.6%	6,154	99.1%	Meets 95%

- CMAS Science Data not available
- Military Enlistment included

• Source: Colorado Department of Education

2022 PERFORMANCE FRAMEWORKS - UNIQUE CONTEXTUAL FACTORS

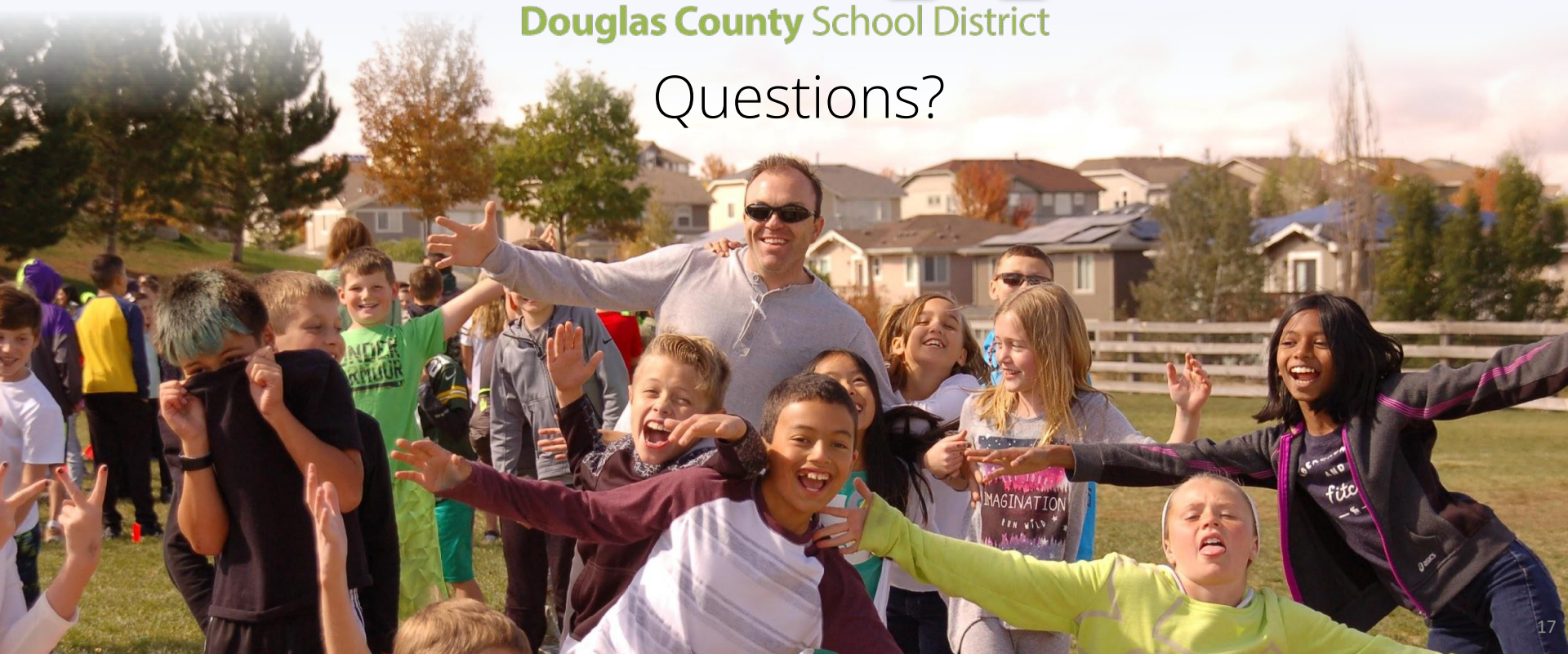
Growth Data Availability - Growth data in 2022 will be limited due to alternating CMAS assessments administered in 2021



• Source: Colorado Department of Education



Questions?

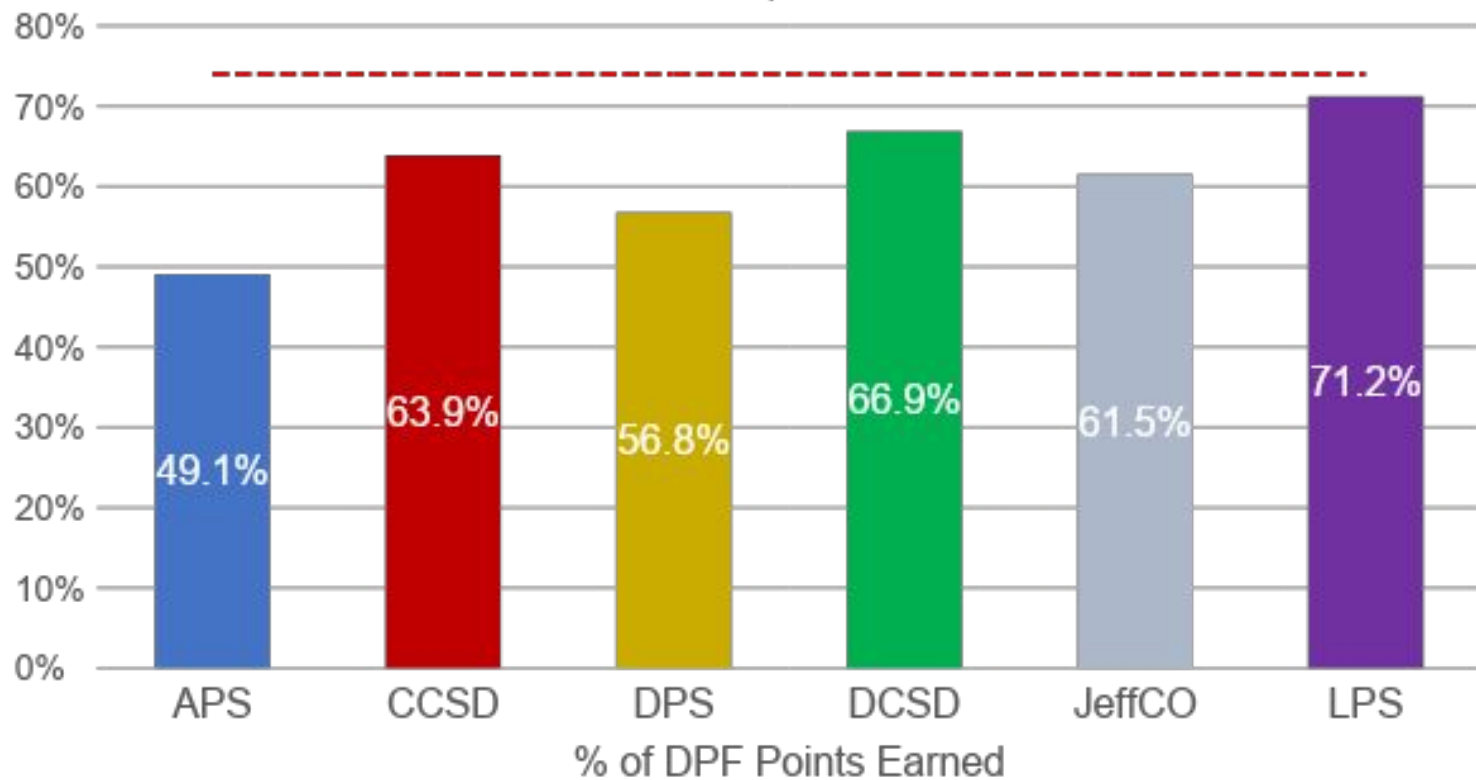


SCHOOL PERFORMANCE FRAMEWORK SUMMARY

	2017	2018	2019	2022
Performance	73	83	82	77
Improvement	10	3	5	3
Priority Improvement	3	2	1	1
Turnaround	--	--	--	--
Insufficient Data	1	1	1	6
	87	89	89	87

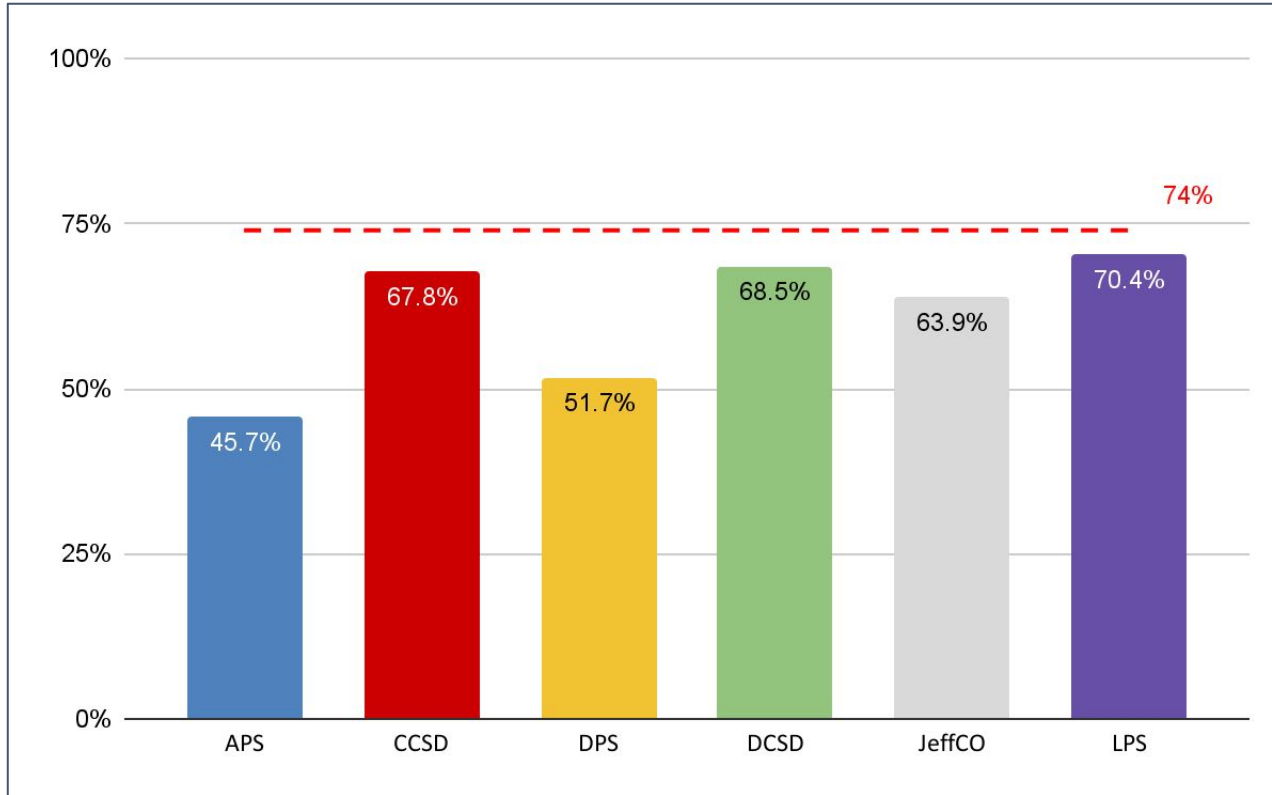
• Source: Colorado Department of Education

2019 DPF Comparative Data



• Source: Colorado Department of Education

2022 Comparative Data



Accreditation categories are based on the total percentage of points earned.

Accredited with Distinction:

74.0% - 100%

Accredited:

56.0% - 73.9%

Accredited with Improvement Plan:

44.0% - 55.9%

Accredited with Priority Improvement Plan:

34.0% - 43.9%

Accredited with Turnaround Plan:

0.0% - 33.9%

- Source: Colorado Department of Education

DPF Trend Data



Accreditation categories are based on the total percentage of points earned.

Accredited with Distinction:
74.0% - 100%

Accredited:
56.0% - 73.9%

Accredited with Improvement Plan:
44.0% - 55.9%

Accredited with Priority Improvement Plan:
34.0% - 43.9%

Accredited with Turnaround Plan:
0.0% - 33.9%

- Source: Colorado Department of Education